

eviXscan 3D Optima+ M



Optimal solution for 3D scanning

The eviXscan 3D **Optima+ M** scanner performs high-quality 3D scans with outstanding key scanning parameters: high measurement accuracy (up to 0.009 mm), high density of points (117 pt/mm²) and a wide measurement range (320 mm x 190 mm x 120 mm). In addition to the excellent performance, the complete stand-alone scanning system with Optima+ M can be purchased at a very attractive price.

Optima+ M is an universal measuring device dedicated to scan objects from 7 to 100 cm. The scanner was designed for use in automated robotic systems due to its lightweight construction and straightforward configuration. It can be successfully applied for reverse engineering tasks, for non-contact quality control as well as for rapid prototyping.

The scanner is supported by an entire portfolio of accessories (including the rotary table of different sizes, the calibrated coded artefacts and markers) and is delivered with calibration board and tripod.

eviXscan 3D Optima+ M scanner

Key features

- optimal scanning range – objects from 7 cm to 100 cm
- high accuracy
- short scan acquisition time
- easy integration with robots and cobots
- excellent value for money



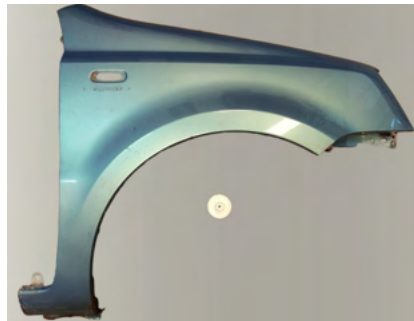
Technical specifications

Measuring range	320 x 190 x 120 mm	Software	eviXscan 3D Suite
Point density	117 pt/mm ²	Export formats	stl, ply, obj, asc, bin
Scanning accuracy	up to 0.009 mm*	Operating system	Windows 10 (64-bit)
Scanning time	1.2 second	Computer connection	USB 3.0
Light source	Blue LED	Hardware requirements	CPU i7, 32 GB RAM, SSD NVMe 480 GB disk, DirectX graphics card
Number and cameras resolution	2 x 7 Mpix		

* Accuracy determined with the use of the standard DE VDI/VDE 2634, Part 2, 4.1 P₅

eviXscan 3D Optima+ M scanner is the optimal solution

Universal scanning range makes quality control, even for objects of different sizes, possible with only one scanner. The modern optics used in the Optima+ M scanner ensures the highest quality of the acquired scans, while maintaining a short scan time. In addition, thanks to the lightweight construction, the scanner can be integrated with robots with a load capacity of only 5 kg, which are usually characterized by a lower price and greater availability.



A rich set of accessories



The standard kit includes eviXscan 3D Suite software, the 20 kg rotary table, the set of artefacts (8 pcs.), the set of 20 mm (1000 pcs.) markers, the tripod, the A3 calibration board, the transportation box.

Optima+ M



Optima +M is an universal device measuring designed for precise scanning medium - sized objects. The scanner was created with application in mind in automatic robotic system.

The eviXscan 3D Suite is required to operate the scanner. Minimum hardware requirements: Windows 10 (64 bit), 32 GB RAM, CPU i7, 480 GB SSD NVMe disk, USB 3.0 connection to a computer.

Functional features

Range width	320	[mm]
Range height	190	[mm]
Range depth	120	[mm]
Accuracy	0,009	[mm]
Scanning distance	400	[mm]
Scan resolution	0,093	[mm]
Points density	117	[pt/mm ²]
Minimum scan acquisition time	1,2	[s]
Operating temperature range	from 10°C to 30°C	[°C]

Design features

Number of cameras	2	
Camera resolution	7	[Mpix]
Light source type	Blue LED	
Cooling type	pasywny	
Computer connection	USB 3.0	
Power	110 - 230V ACV; 50/60Hz	

Physical features

Scanner weight	5,05	[kg]
Scanner dimensions	350 x 290 x 90	[mm]
Weight of the shipping kit	26,55	[kg]
Dimension of the transport box	75,2 x 39,4 x 23,8	[cm]