

# eviXscan 3D Heavy Duty Quadro



## Scans in almost all conditions

eviXscan 3D Heavy Duty Quadro is a scanner that uses blue structured light. It has a sealed, closed housing, made entirely of oxidized aluminum. This design securely protects the inside of the scanner from accidental mechanical damage, moisture and dust.

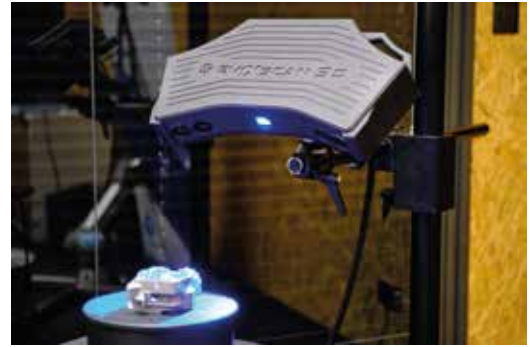
**Heavy Duty Quadro** is ideal for continuous operation in production halls with variable temperatures and lighting. Active cooling further increases the scanner's high temperature resistance.

Two scan ranges measure the geometry of complex objects of different dimensions. The range change is done through the software and does not require lens change or recalibration, which makes working with the scanner much easier. In addition, two scan ranges increase the versatility of the Heavy Duty Quadro scanner.

# Scanner eviXscan 3D Heavy Duty Quadro

## Key features:

- ready to work in different ambient conditions,
- high resistance to external factors,
- versatility thanks to two scan ranges,
- ease of changing the range,
- distance positioning lasers.



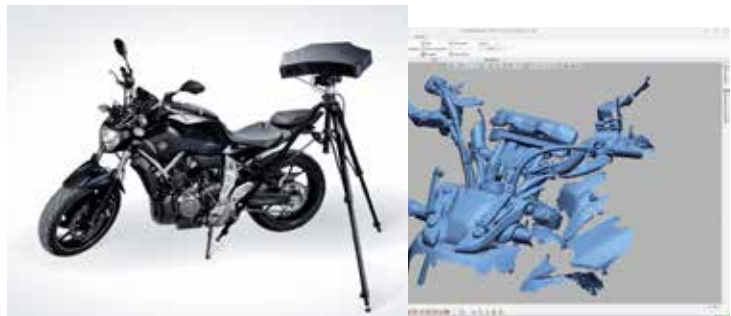
## Technical parameters

Measuring range	210 x 145 x 90 / 370 x 265 x 150 mm	Software	eviXscan 3D Suite
Points density	161 / 50 pt/mm <sup>2</sup>	Export formats	stl, ply, obj, asc, bin
Scanning accuracy	0,013 / 0,035 mm	Operating system	Windows 10 (64 - bit)
Scanning time	5 second	Computer connection	USB 3.0 & HDMI
Light source	Blue LED	Hardware requirements	CPU i7, 32 GB RAM, SSD disc,
Number and type of cameras	4 x 5 Mpix		DirectX graphic card

\*Scanning accuracy according to DE VDI/VDE2634

## The eviXscan Heavy Duty Quadro is ideal for quality control as well as reverse engineering.

Loster company uses the Heavy Duty Quadro scanner to design new motorcycle components. In the process of product development, in order to maintain the original quality, it is necessary to recreate the geometry of the original parts. The use of 3D scanning technology greatly accelerates the entire production process and improves its quality, in addition, increases repeatability and allows easy editing of prepared models.



## A rich set of accessories



The standard kit includes eviXscan 3D Suite 2.7 software, a 20 kg rotary table, a set of artifacts (8pcs.), a set of 20 mm (1000 pcs.) markers, a calibration pad, a tripod, an A3 calibration board, a transport box.

# Heavy Duty Quadro



eviXscan 3D Heavy Duty Quadro scanner is distinguished by two scan ranges and high resistance to external factors. In addition, it is equipped with lasers positioning the distance, that make it easier to work with the scanner.

## Functional features

Scan range	210 x 145 x 90 / 370 x 265 x 150	[mm]
Accuracy	0,013 / 0,035	[mm]
Scanner distance from scanned object	410 / 800	[mm]
Points density	161 / 50	[pt/mm <sup>2</sup> ]
Minimum scan acquisition time	5	[s]
Operating temperature range	od 10 - 30	[°C]

## Design features

Number cameras	4	
Type of cameras	5	[Mpix]
Light source type	Blue LED	
Cooling type	active	
Computer connection	USB 3.0 / HDMI	
Power	110 - 230V, 2,5 A, 50/60Hz	

## Physical features

Scanner weight	7	[kg]
Scanner dimensions	520 x 280 x 95	[cm]
Weight of the shipping kit	29	[kg]
Dimension of the transport box	75,2 x 39,4 x 23,8	[cm]